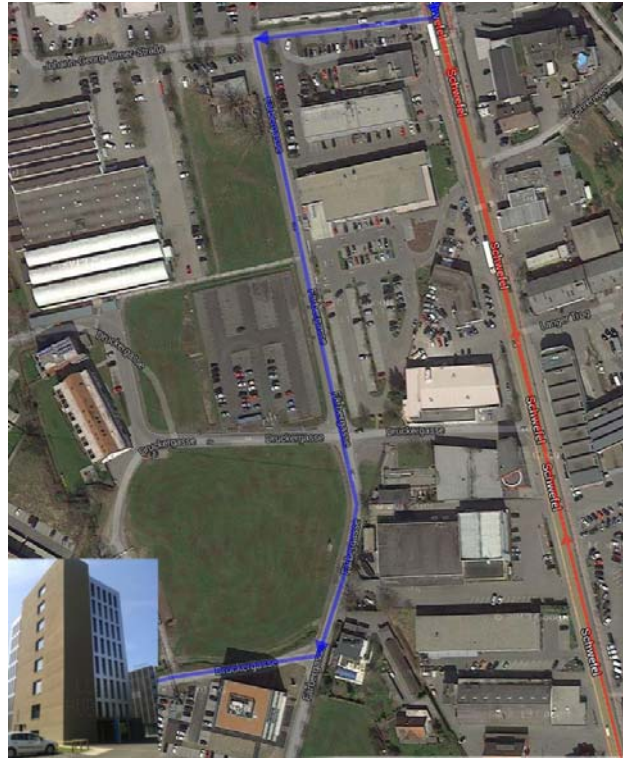
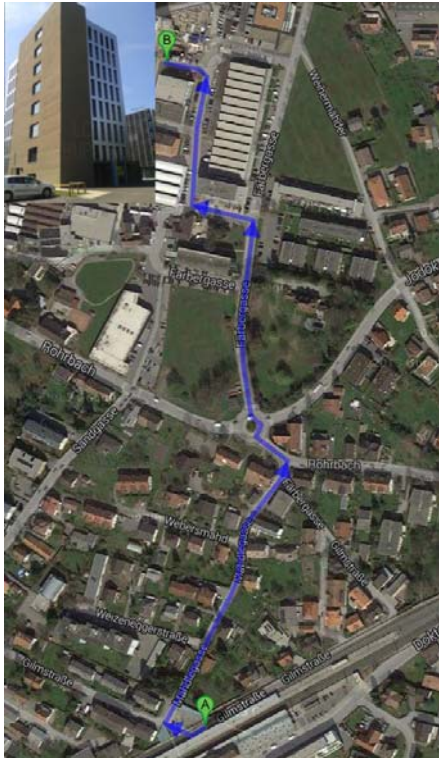


Getting There

LCT ONE - Life Cycle Tower One, Regional development association, 3rd Floor

Färbergasse 17b, 6850 Dornbirn



Direction from train / bus station:

At the station take the underpass and go through the pedestrian right, follow this road to the roundabout circulation, at the roundabout take the 2nd exit.

Then, after approx. 100 m you can see the Rhomberg area on the left. Move on and take the 3rd entrance on the left. Then follow this road about 150 m. Right next to the large car park house is the Life Cycle Tower. Walking time 8 min.

Coming from the city:

“Schwefelstraße” in direction to motorway, turn left at McDonalds, after McDonalds entrance also turn left. Follow this road for 300 m. Then on the right you can see the Rhomberg area. Take the 1st entrance on the right. The Life Cycle Tower is the 3rd building on the left, directly beside the large car park house.

Coming from motorway „Dornbirn-Nord“:

“Schwefelstraße“ in direction to the city, turn right at McDonalds, after McDonalds entrance turn left. Follow this road for 300 m. Then on the right you can see the Rhomberg area. Take the 1st entrance on the right. The Life Cycle Tower is the 3rd building on the left, directly beside the large car park house.